

- EXISTING COMMUNITY CENTER
- NON-VISIBLE ARCHWAY (RELOCATE)
- OLD SCHOOL HOUSE
- EXISTING INFORMAL BALL FIELDS
- CHAMBLEE PROPERTY
- EXISTING FIELD
- CONCESSIONS / RESTROOMS
- EXISTING PAVED MULTI-USE TRAIL (LOCATED THRU-OUT PARK)
- EXISTING FIELD
- EXISTING FIELD

- NON-VISIBLE ARCHWAY (RELOCATE)
- EXISTING PARKING
- EXISTING LACROSSE FIELD
- EXISTING TENNIS COURTS
- STAIRS
- SCENIC POND AND GAZEBO
- GAZEBO
- PLAYGROUNDS
- PICNIC SHELTER / GAZEBO
- NON-VISIBLE ARCHWAY (RELOCATE)
- EXISTING FIELDS
- KUDZU VALLEY

Walking Trails Measured in Miles

Loop #1 = .35 miles (highlighted in green)

Loop #2 = .63 miles (highlighted in orange)

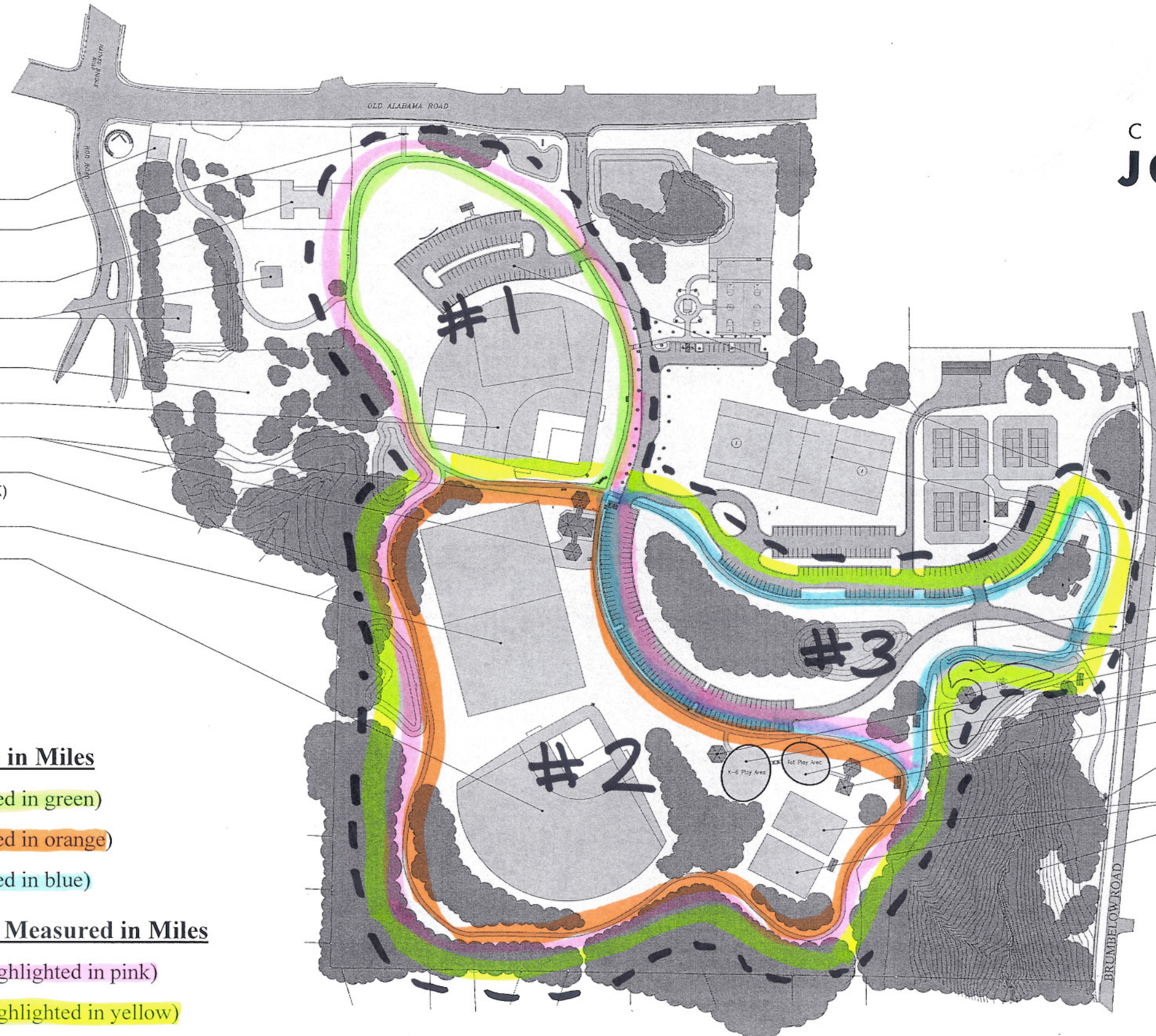
Loop #3 = .52 miles (highlighted in blue)

Combined Outside Loops Measured in Miles

Loop #1 and #2 = .86 miles (highlighted in pink)

Loop #2 and #3 = .79 miles (highlighted in yellow)

Loop #1, #2 and #3 = 1.02 miles (highlighted in dashed black)



Newtown Park

fulton county, georgia

EXISTING CONDITIONS

